

How To Build Agentic AI Into Your Next Audit

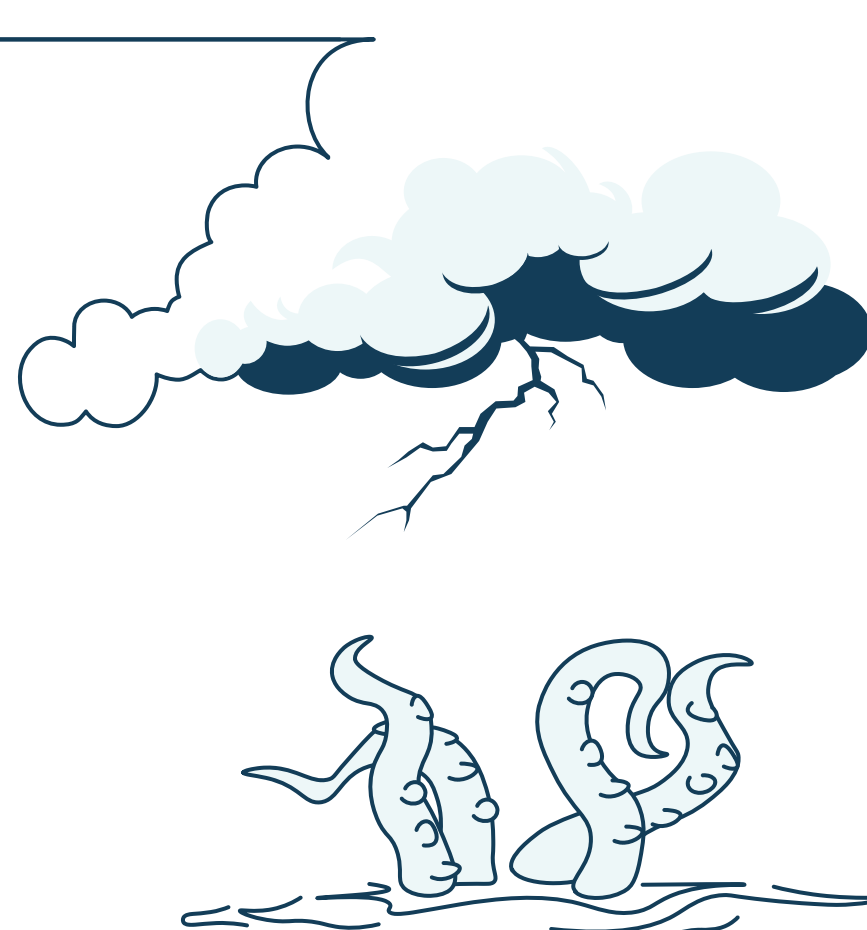
How real-world audit teams are using reasoning-based AI with KNIME

Why Traditional Audit Tools Fall Short

Today's reality

- Don't support an analytics-first audit approach to support automation at scale.
- Spreadsheet heavy audit testing is error-prone and rules out full population testing.
- Overly technical interfaces make it difficult for regular auditors to do audit analytics.

Traditional tools can improve speed or insight, but not both.



What Agentic AI Adds

Key benefits

- Understands policy context and changing rules.
- Spots unforeseen anomalies, not just the ones you're testing for.
- Explains why something is an exception, not just that it is one.

Agentic AI in one sentence

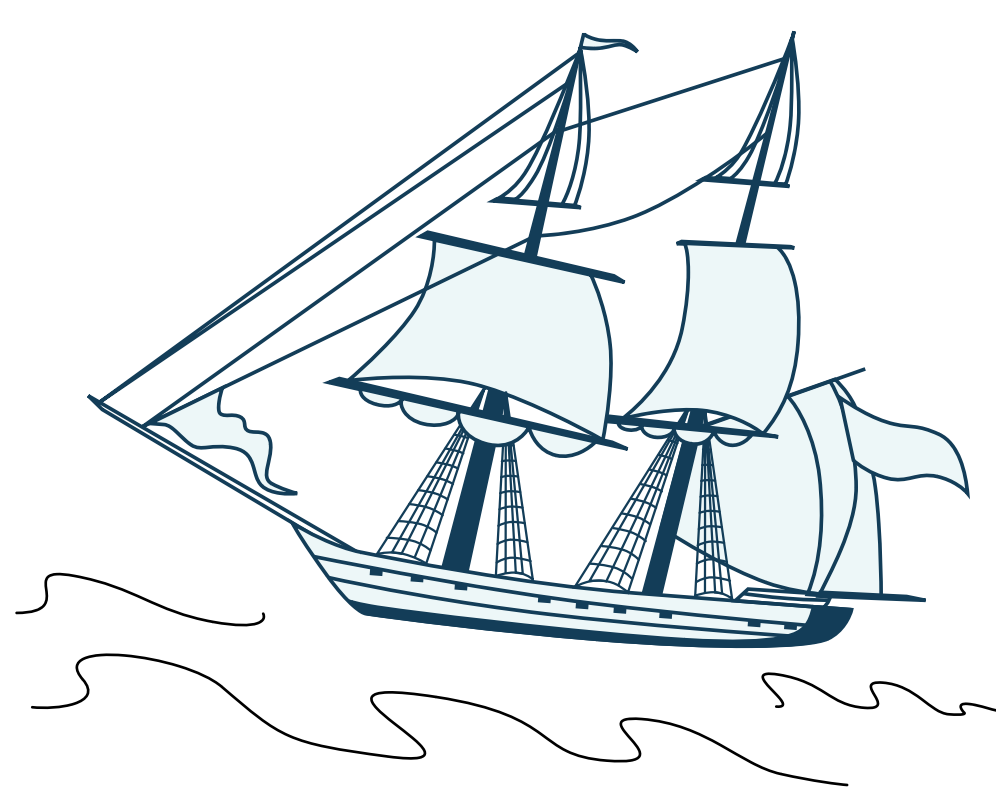
AI that can plan, choose tools, act and explain its reasoning.

How to Build Audit Agents with KNIME

The three layers of Agents

- **Tools:** Analytics workflows that do one job (parse policies, run SQL, detect anomalies).
- **Agent:** LLM reasoning that selects from those tools to achieve a pre-defined goal.
- **Interface:** Chat style view or API where auditors ask questions.

All no-code and fully traceable in visual workflows.



One Example Agent

KNIME Audit Assistant

Input field for user prompts

Example prompts

Prompt

- Summarize the key rules in the Global Sales and Discount Authority Policy.
- Find business class expenses without required approval.

Output

- A summary to concisely explain policy requirements.
- A table with all flagged expenses.

High Value Use Cases

Journal entry risk scoring

Detect unusual posting patterns across the full ledger.

Related party and vendor checks

Link HR and vendor data to find hidden conflicts.

Travel and expense integrity

Catch duplicate or out of policy claims automatically.



Get Started

Talk to our team about production-ready audit agents

[Book a call →](#)